

Construct new parapet wall, support off steel frame support of existing walls to engineers detail. Line out to soffit in plasterboard. The externally in zinc. Existing walls to be removed where necessary.

New clear double glazed rooflight supported off steel frame support of existing walls to engineers detail. Line out to soffit in plasterboard. The externally in zinc.

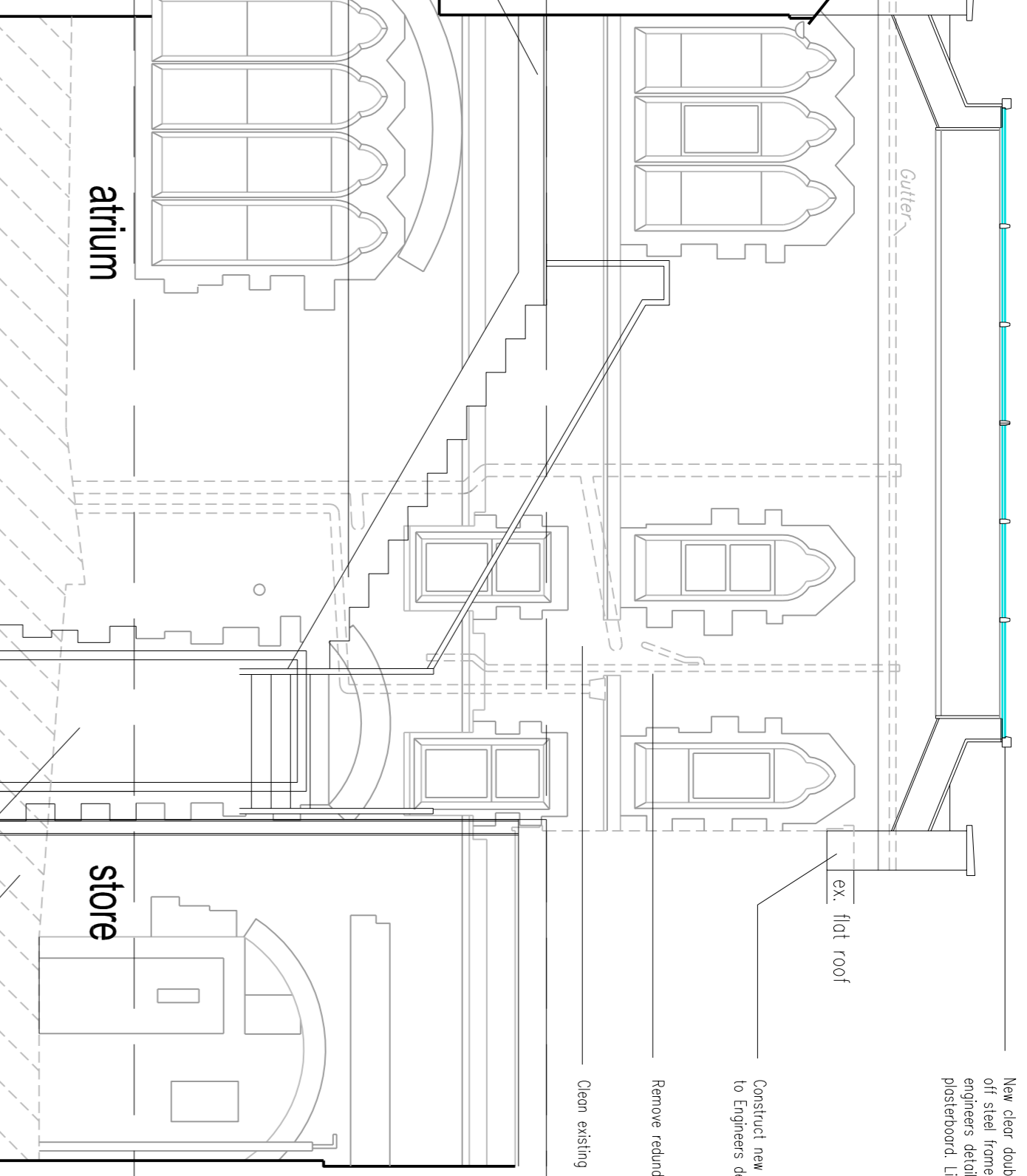
Ex. g floor FL 56.82

Construct new floor. Line out to in plasterboard. Floor covering TBA

New staircase to detail TBA. Materiality to be confirmed. New frame, posts, handwork, rods and handrails, glass panel balustrade

Ex. circuit office FL 53.13

Ex. basement FL 51.91



Construct new parapet wall, beam support to Engineers design from parapet gutter

Remove redundant rainwater goods

Open existing masonry

Excavate existing courtyard to reduced level (noted). Underpin existing walls to circuit office as necessary to engineers design.

Remove existing window, modify to form door opening

lantern

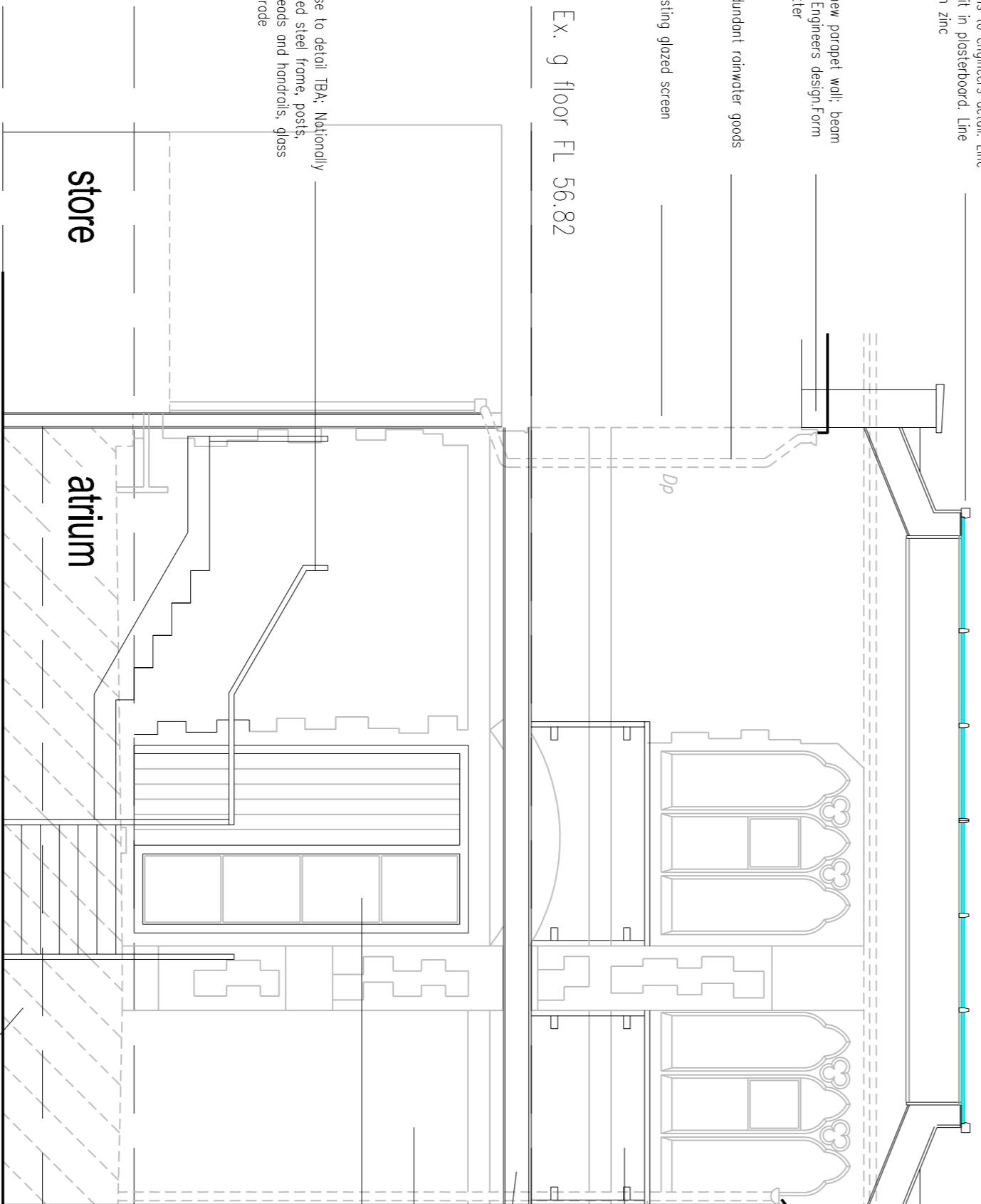
New clear double glazed rooflight supported off steel frame support of existing walls to engineers detail. Line out to soffit in plasterboard. The externally in zinc.

Construct new parapet wall, beam support to Engineers design from parapet gutter

Remove redundant rainwater goods

Remove existing glazed screen

Ex. g floor FL 56.82



Construct new parapet wall, support off existing wall to Engineers design from parapet gutter/dk, modify existing roof as necessary

Glass balustrade to form protection to lightwell with handwork handrail

New timber floor fixed to soffit with plasterboard. Floor covering TBA

Clean existing masonry

Carefully remove existing window and stone surround. Relocate to north wall of circuit office. Modify opening to provide new door opening and glazed screen

Ex. basement FL 51.91

Ex. footing

Ex. basement FL 51.91

Excavate existing courtyard to reduced level (noted). Underpin existing walls to circuit office as necessary to engineers design.

Atrium Section E-E (east)

Responsibility is not accepted for errors made by others in scaling from this drawing. All construction information should be taken from figured dimensions only.

A1 Original Sheet Size

0mm

100mm

2006.13

A

HMT

JAF

Planning Issue

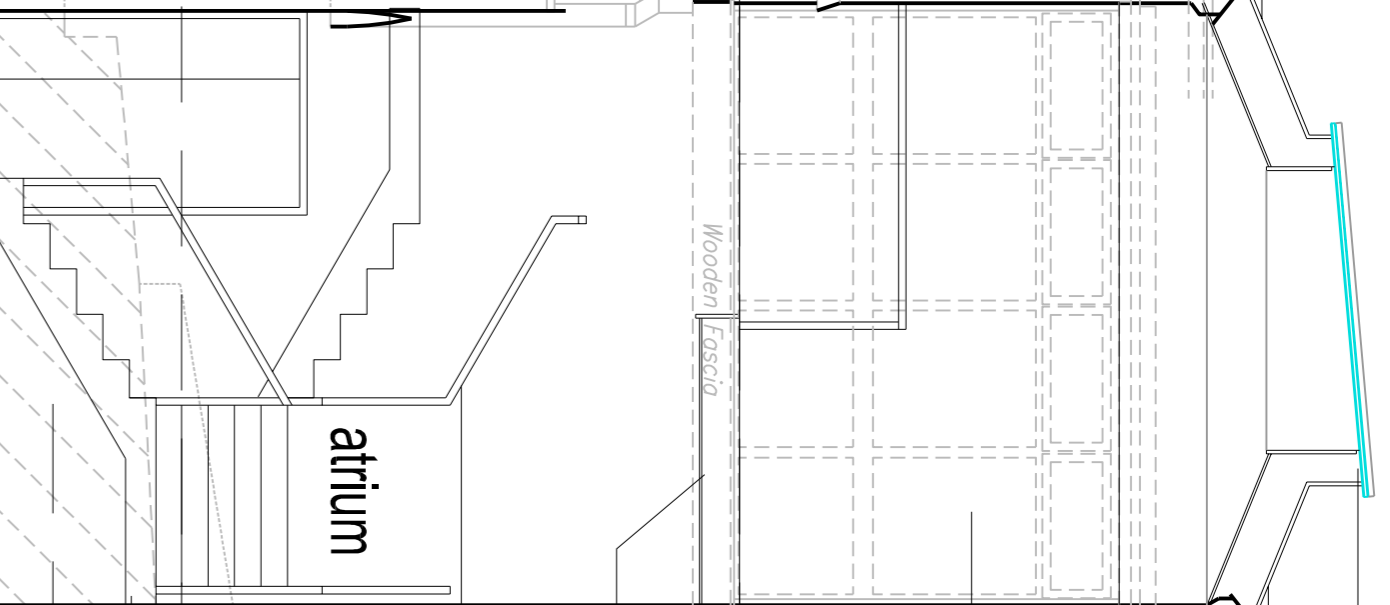
Ex. g floor FL 56.82

Construct new floor. Line out to in plasterboard. Floor covering TBA

New staircase to detail TBA. Materiality to be confirmed. New frame, rods and handrails, glass panel balustrade

Ex. circuit office FL 53.13

Ex. basement FL 51.91



Form new gutter. Modify existing roof covering to suit.

Remove existing glazed screen

Open existing masonry

Construct new floor. Line out to in plasterboard. Floor covering TBA

New staircase to detail TBA. Materiality to be confirmed. New frame, rods and handrails, glass panel balustrade

Ex. footing

Excavate existing courtyard to reduced level (noted). Underpin existing walls to circuit office as necessary to engineers design.

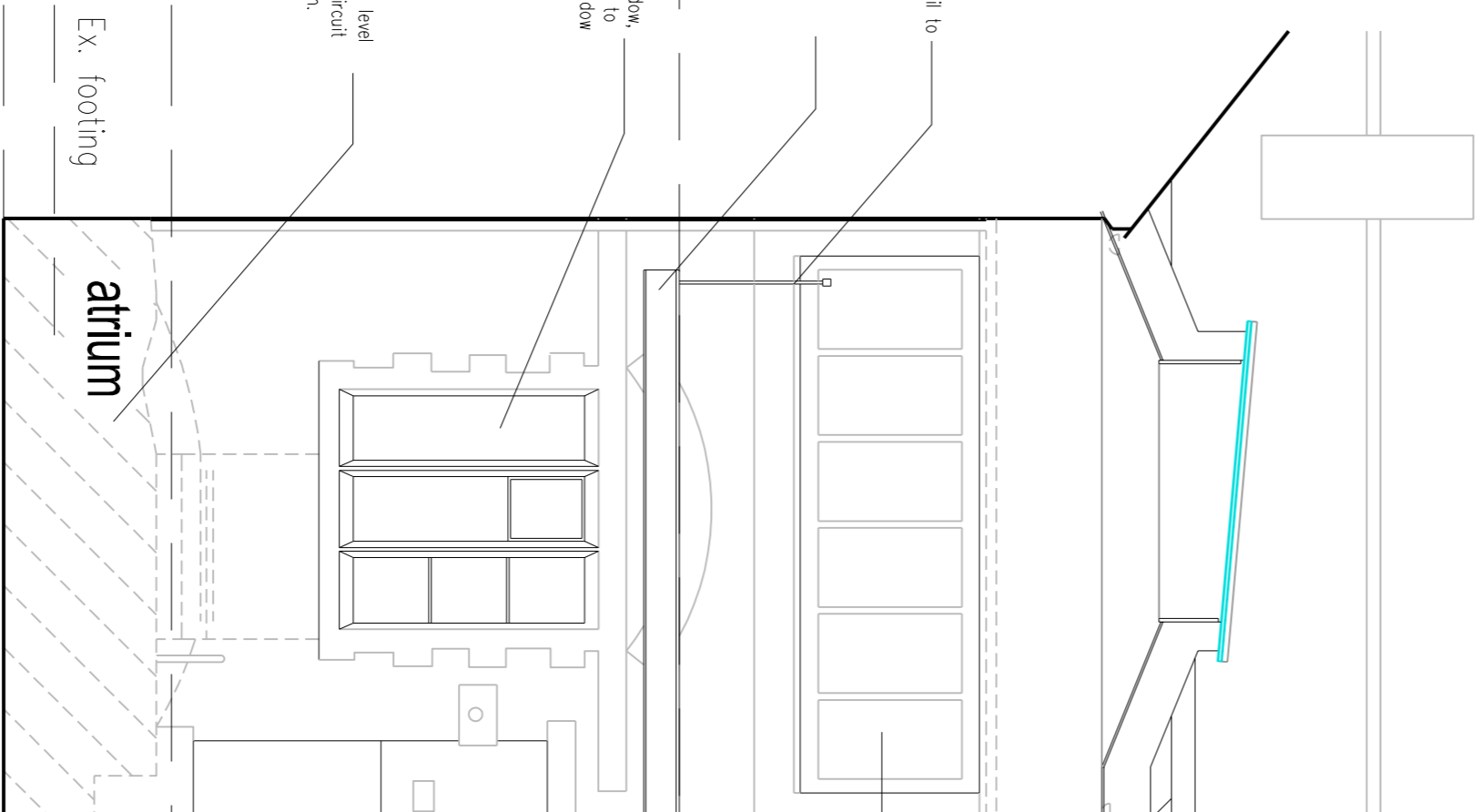
Atrium Section D-D (north)

New clear double glazed rooflight supported off steel frame support of existing walls to engineers detail. Line out to soffit in plasterboard. The externally in zinc.

Form new gutter. Modify existing roof covering to suit.

Rearr existing glazed glass

Ex. g floor FL 56.82



Glass balustrade with handwork handrail to protect lightwell

New timber floor fixed to soffit with plasterboard. Floor covering TBA

Remove existing modern door and window, relocate to north wall of circuit office. Modify existing and reveal salvaged window from side elevation of circuit office.

Excavate existing courtyard to reduced level (noted). Underpin existing walls to circuit office as necessary to engineers design.

Ex. footing

Ex. basement FL 51.91

Atrium Section F-F (south)

Planning Issue

Stride Treglown

Architectural Team Planning Interior Design Building Surveying Landscape Architecture Graphic Design
Promenade House The Promenade, Clifton Down, Bristol BS8 3NE
T 0117 974 3271 F 0117 974 5207 www.stridetreglown.co.uk



PROJECT
Victoria Church, Clifton, Bristol
Proposed Re-ordering

DRAWING TITLE
Preliminary Sections: Atrium

SCALE	DATE	DRAWN	CHK	DRAWING NUMBER	REV.
1:50	11.03.2013	HMT	JAF	13830(SK)24	A